

## Purified Anti-Human CD32 Antibody[MDE-8]

catalog number: AN007570P

**Note:** Centrifuge before opening to ensure complete recovery of vial contents.

### Description

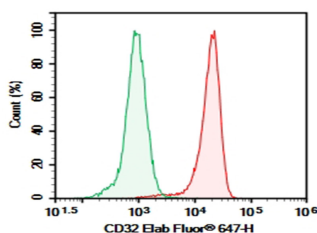
<b>Reactivity</b>	Human
<b>Immunogen</b>	Recombinant Human CD32 protein
<b>Host</b>	Mouse
<b>Isotype</b>	Mouse IgG1, $\kappa$
<b>Clone</b>	MDE-8
<b>Purification</b>	>98%, Protein A/G purified
<b>Buffer</b>	Phosphate-buffered solution, pH 7.2, containing 0.05% non-protein stabilizer. Dialyze to completely remove the stabilizer prior to labeling.

### Applications

### Recommended Dilution

<b>FCM</b>	2 $\mu\text{g}/\text{mL}$ ( $0.5 \times 10^6$ - $1 \times 10^6$ cells)
------------	--

### Data



Human peripheral blood granulocytes cell were stained with 0.2  $\mu\text{g}$  Purified Anti-Human CD32 Antibody[MDE-8] (Right) and 0.2  $\mu\text{g}$  Mouse IgG1,  $\kappa$  Isotype Control (Left),

followed by Elab Fluor® 647-conjugated Goat Anti-Mouse IgG Secondary Antibody.

### Preparation & Storage

<b>Storage</b>	Store at 4°C valid for 12 months or -20°C valid for long term storage, avoid freeze / thaw cycles.
<b>Shipping</b>	Ice bag

### Background

Fc gamma RII, also known as CD32, is a group of three closely related proteins (Fc gamma RIIA, Fc gamma RIIB, Fc gamma RIIC) that share greater than 94% amino acid identity in their extracellular domains with Fc gamma RIIB and Fc gamma RIIC having identical extracellular domains. They function as transmembrane receptors for the Fc portion of IgG molecules. These proteins are expressed by various hematopoietic cells including monocytes, macrophages, neutrophils, NK, T and B cells. The Fc gamma RII proteins are involved in phagocytosis of immune complexes and modulation of antibody production by B cells.

### For Research Use Only